

Go Cultural Aboriginal Tours & Experiences



Wadjemup holds an ancient and deep spiritual connection for the Whadjuk Noongar people. Walk with us at Wadjemup - the local Aboriginal name for Rottnest Island - for a surprising 60min walking tour or extended 2-hour cultural immersion with local Noongar guide, Walter. Guaranteed to heighten your appreciation of Wadjemup, our tours are delivered from a unique Aboriginal perspective highlighting the cultural significance of the island and relevance of many of its historic buildings and infrastructure that tell of the island's notorious past. Departs from the Rottnest Island Visitor Centre, Rottnest Island. Bookings essential.

gocultural.com.au **Ph: 9429 8875**
Wadjemup – Rottnest Island

Guided Walking Tours



Be intrigued by stories of the past and discover more about Wadjemup / Rottnest Island on a free walking tour led by the Rottnest Voluntary Guides Association (RVGA) volunteers. Meet the iconic Rottnest Island quokka, take an insightful stroll through the historical settlement, hear tales of shipwrecks and sailors, or for a small fee, climb to the top of Wadjemup Lighthouse for stunning views of the island or take a tour of the Oliver Hill Guns and Tunnels from World War II. Find out more at the RVGA Information Booth, located next to the Salt Store.

rotnestisland.com/walkingtours
Wadjemup / Rottnest Island

Geordie's Cafe & Art Gallery



Now licensed and open 365 days per year! Walk, bike or catch the shuttle to Geordie Bay Square to enjoy the Bays area and truly slip into Island time. Featuring something for everyone; local beers, wines, handcrafted cocktails and 5 Senses coffee for the adults and fresh juices, smoothies, old fashioned shakes, spiders and homemade desserts for the kids. (or the kid in all of us!). Choose from our extensive breakfast, lunch, dinner or kids menu, and sit inside in our Art Gallery restaurant or outside under our retractable roof. Phone or email for catering or function enquiries.

Email: gbc@rotnestcatering.com.au. Dinner reservations can be made online.
geordiebaycafe.com.au **Ph: 0402 990 870**
Geordie Bay Square, Rottnest Island

Pinky's Rottnest Island



Overlooking the famous Pinky Beach with the iconic Bathurst Lighthouse as its backdrop, Pinky's Rottnest Island is where good times meet great food. Our modern Australian cuisine proudly showcases local flavours, perfectly paired with our cocktails and Western Australian beers and wines. Pinky's is the centrepiece of 'Discovery Resorts - Rottnest Island,' where beachside dining is an easy 1km walk from the jetty. Enjoy your choice of breakfast, lunch, and dinner, served with a side of fun and unparalleled views – all are welcome.

pinkysrotnestisland.com.au **@pinkys.rottnestisland**
Strue Road, Rottnest Island

Pedal & Flipper Hire



Find all your bicycle and snorkel hire needs at Pedal & Flipper. Cycling is the perfect way to explore Wadjemup / Rottnest Island, you can choose from bicycles, electric bicycles and children's bikes. And if you're not sure you'll make it around the island, try a 'Bike & Bus' option. Keen to explore the water? We've got a range of stand up paddleboards and snorkel sets to choose from. You'll find our friendly team located at Pedal & Flipper, behind Hotel Rottnest, Thomson Bay.

Book online: rotnestisland.com/pedalandflipper
Bedford Avenue, Rottnest Island

Island Gypsy



Island Gypsy is located in the historical Salt Store building in Thomson Bay's main settlement and stock a large range of beach accessories, souvenirs and gifts. Take a look around one of the island's oldest buildings, browse the range of on trend products, locally made arts and take home something special from your time at Rottnest Island. Island Gypsy is also a stockist for the iconic Keiko Uno Rottnest Island inspired jewellery, CoolCabanas, We are Feel Good Inc, Rip Curl and Le Specs. Email: hello@islandgypsy.com.au

islandgypsy.com.au **Ph: 0484 849 685**
Henderson Ave, Rottnest Island

Rottnest Air Taxi



Getting to Rottnest is quick and easy in your private aeroplane with Rottnest Air-Taxi. Air-Taxi flights are at 'local' prices, with flexible departure times all hours of the day. Land on Rottnest for a quick couple of hours, the whole day, or stay for a week! Our aeroplanes will take you high above the ocean swell, and we'll get you there without the drama. Jandakot Airport is 20 minutes from Perth City on the southern (Kwinana) freeway. Travel direct or take a tour along the way. Otherwise, check out our terrific Joy-flights from Rottnest Island. Book Rottnest Air-Taxi for something really special!

rotnestairtaxi.com.au **Ph: 0421 389 831**
Jandakot Airport, Jandakot

Swan River Seaplanes



The best views of Rottnest Island are from the Sky! With seaplane flights from the Swan River to Rottnest Island, there is no faster or more convenient way of reaching Rottnest Island direct from Perth City. With one-way and return flights, along with fly-ferry and tour packages available, there is an option to suit everyone with even the most complex holiday itineraries. Flights and packages priced from \$195 per adult. Scan QR code to view Rottnest Island packages.

swanriverseaplanes.com.au **Ph: 9417 8005**
Wadjemup / Rottnest Island

Quokka Coaches



Quokka Coaches offers unique tours for you to experience the beauty of Rottnest. Our Island Explorer hop on, hop off bus lets you jump off at your leisure to see wildlife or have a swim. The twice daily 90-min Bayseeker Island tour provides an insight into the many wonders of Rottnest. For a full day guided experience combine this with the Oliver Hill Guns & Tunnel tour for a Grand Island tour which offers a glimpse into the island's fascinating WWII history. Quote HELLOMAP to receive 20% off Discount valid for direct bookings only, not in conjunction with other offers.

australianpinnacletoours.com.au **Ph: 6270 6060**
Main Bus Settlement, Thompson Bay

Wadjemup Musuem



The Wadjemup Museum is a place for visitors to explore and learn Wadjemup / Rottnest Island's rich history. Take a walk around the museum and discover a range of exhibits including 40,000-year-old artefacts, vintage postcards, contemporary artworks, and incredible outdoor sculptures. The Wadjemup Museum shares the history of the island through stories about Aboriginal imprisonment, natural history, arts and culture, and contemporary milestones like how the Island was used for quarantine in 2020. Wadjemup Museum is open every day from 10am – 3:30pm.

rotnestisland.com/museum
Wadjemup / Rottnest Island

Segway Tours WA



Explore Rottnest Island's breathtaking scenery and natural beauty on your own revolutionary set of wheels! Segway Tours WA provides fun, informative and eco-friendly guided tours on Rottnest Island, exploring the island's most hidden treasures and taking you places you've never been before. No experience is necessary to ride a Segway, they are easy to ride and they will train you to ride with confidence before beginning your tour. All tours are fully guided with professional guides leading the way, so you can just relax and take in the stunning views around you. Suitable for children 12yo and over and there is no upper age limit.

segwaytourswa.com.au **Ph: 1300 80 8180**
Bedford Avenue, Rottnest Island

Samphire Rottnest



Samphire Rottnest takes prime beachfront position on Thomson Bay, encouraging you to immerse yourself in the elements and feel the sand between your toes. Samphire Rottnest offers 80 spacious rooms, all with private balconies and beautiful views. Inviting the relaxed coastal vibe in, the rooms have been thoughtfully designed to complement their raw, natural surroundings to deliver an experience that is respectful, understated and relaxed. Outside your room, choose to explore the island or relax poolside, under one of Samphire's stylish poolside cabanas with a cocktail in hand.

samphirerottnest.com.au
1 Bedford Ave, Rottnest Island

SeaLink Rottnest Island

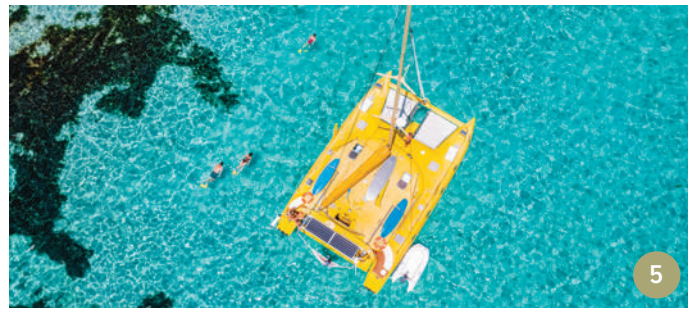


Departing daily from Fremantle and Perth, SeaLink Rottnest Island offers the most modern ferry service to Perth's favourite island paradise. Offering great savings for families with our kids travel free deal. All vessels are fully accessible and complete with free Wi-Fi and café/bar facilities. Offering multiple departures daily, our experienced team can tailor make an itinerary to suit you.

Call today and let the friendly crew in blue arrange your next holiday to Rottnest Island.

sealink.com.au **Ph: 9325 9352**
B Shed, Victoria Quay • Barrack St, Perth

Charter 1



Experience the best of Rottnest aboard this iconic luxury sailing catamaran. Let Charter 1 take you on a magical adventure to one of the beautiful bays or snorkel trails situated around the island. Soak up the sun, interact with local marine life or take a ride in their huge cargo net! Or enjoy a relaxing sunset sail and watch the day melt away with Bathurst Lighthouse and the island as stunning backdrops. Tours operate on select dates in Nov and Jan to April, (closed June to August). Private charters also available. For live schedules and to make a booking, please visit the website.

charter1.com.au **Ph: 0499 444 796**
Thompson Bay, Rottnest Island

The Mezz on Rotto



The Mezz on Rotto is excited to bring you delicious tapas dishes accompanied by an extensive cocktail menu. Relax by the water's edge and enjoy spectacular panoramic views over Thomson Bay as you indulge in their modern shared tapas menu. Grab some friends and watch the magical sunset with a cocktail in hand. Come and enjoy the hospitality of The Mezz each summer! Open from November to April each year.

frankiesonrotto.com.au **Ph: 0431 735 090**
Thomson Bay, Rottnest Island

Isola Bar e Cibo



Isola Bar e Cibo, a touch of Italy on Rottnest Island. Isola reflects the simplicity of island life, drinking and dining right on the beach, with the sophistication of an Italianate drinks list and simple dishes built on quality WA produce. Isola serves classic Italian cocktails, spritz and vini speciali alongside fresh pasta dishes, meats and WA seafood cooked over our charcoal fired grill. As you would on the Amalfi Coast, laze back with an Aperitivo while looking over the endless beauty that is Thomson Bay.

isolabarecibo.com.au
Thomson Bay, Rottnest Island

Rottnest Express



With more than 60 years of trusted and reliable service and considered Rottnest Island's largest cruise company, no one knows Rotto like we do. With daily ferry services to Rottnest Island and island touring options, you can discover more of this must-see destination with us. Get close to nature on a thrilling adventure boat, join a bus tour, hire a bike or make it a full island experience with lunch included too. Quote HELLOPERTH15 to receive 15% off our same day return ferry fares and day tour packages. Conditions apply.

rotnestexpress.com.au **Ph: 1300 467 688**
B Shed & Northport, Fremantle • Barrack St, Perth

Skydive Geronimo



Rottnest Island - Australia's best skydive location! Located just 19kms off the coast of Fremantle, Rottnest Island is only a short ferry ride away, making it the perfect choice for your next skydiving adventure. Enjoy stunning views of the entire island on your flight up to jump altitude, and as you experience the rush of a lifetime, check out amazing views of Perth city and the coastline beyond as your parachute lands on the beach. Open all year round. Bookings essential.

skydivegeronimo.com.au **Ph: 1300 449 669**
Rottnest Island Airport, Rottnest Island, WA

Frankie's on Rotto



Located within the settlement, Frankie's on Rotto is open for breakfast, lunch and dinner and boasts a casual, family friendly vibe. Frankie's on Rotto is the perfect place to sit back, take in the island and enjoy a delicious meal. We are also proud to offer a delivery service during the warmer months. With tasty coffee, a delicious breakfast menu and an array of pizza, pasta and salad dishes for lunch and dinner, Frankie's on Rotto is sure to keep the family fed. Let the kids play in the park opposite, while you relax with a glass of wine or beer. Keep a look out for Lexi's & Kalli's at the West end and Wadjemup Lighthouse too. They will be waiting with a refreshing cold drink or coffee.

frankiesonrotto.com.au **Ph: 0431 735 090**
342 Somerville Drive, Rottnest Island

Hotel Rottnest



The iconic Hotel Rottnest offers a relaxed beachside experience with endless views over Thomson Bay. Spend the afternoon sitting back with a beer or one of their signature cocktail jugs from the Island Bar. During summer, music at Hotel Rottnest adds to the beach party vibe. Enjoy live music every weekend with some of the best local entertainment in WA and beyond. The menu is designed to be shared together and is a nod to the nostalgic memories that Rottnest has provided for many generations, and many more to come.

hotelrotnest.com.au
Thomson Bay, Rottnest Island

Rottnest Fast Ferries



Experience everything Perth's Island paradise has to offer with Rottnest Fast Ferries - the fastest and most affordable way to Rottnest from Perth City. With the largest variety of travel packages, explore by bike, bus, kayak, Segway or even via a helicopter! Complimentary hotel pick up and drop off transfer departs from Perth, servicing major hotels in the CBD, Northbridge, Scarborough and along the Sunset Coast. Quote HELLOMAP to receive 20% off Discount excludes island admission fee, valid for direct bookings only and not in conjunction with other offers.

rotnestfastferries.com.au **Ph: 9246 1039**
Hillarys Boat Harbour, Hillarys

Keiko Uno Jewellery



Inspired by the breathtaking West Australian coast, relive fond memories of Rottnest with your piece of Keiko Uno Jewellery. Experience the romance of soft white sand beaches, marvel at crystal blue waters, indulge in magnificent sunsets, and escape to the freedom of an island paradise. Rottnest is second home to Keiko Uno, a highly regarded second-generation Perth artisan jeweller, who spends her Summers diving in her favourite bays to draw inspiration for internationally renowned luxury ocean motif creations. See why so many aspire to own a piece of Keiko Uno Jewellery @keikounojewellery and visit the Keiko Uno Jewellery display at Island Gypsy.

keiko-jewellery.com **Ph: 0400 211 731**
Keiko Uno Jewellery

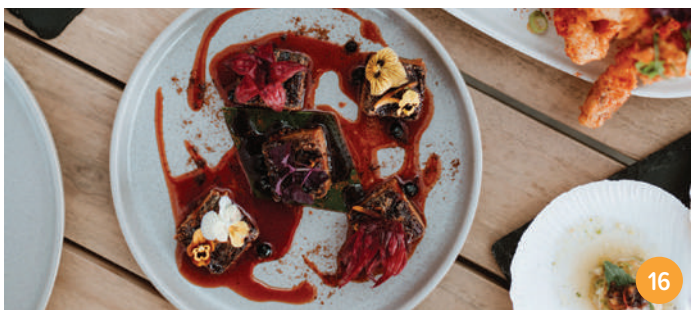
Lexi' on Rotto



Lexi's on Rotto is a vintage 1970's caravan that has been lovingly restored and is located at West End. Relax with a snack and enjoy the stunning coastal views, stop for an ice cold drink during your bike ride, or enjoy a delicious barista-made coffee before you cycle back to The Settlement! You can enjoy the same quality, barista-made coffee at Lexi's that you can get from big brother Frankie's, Open 10 - 3 daily. Drop by and say G'day!

frankiesonrotto.com.au **Ph: 0431 735 090**
West End, Rottnest Island

Lontara



Inspired by the rich history and flavours of the archipelagos of South-East Asia, Lontara is a must-try when visiting Rottnest Island. You're invited to immerse yourselves into the heart of Samphire Rottnest, embracing the natural elements and raw beauty of Rottnest Island. Lontara's menu is enhanced by the quality and flavour of fresh local produce from within Western Australia. Let Lontara take you on a culinary journey with heart-felt food that's designed to be shared. Settle in, soak up the views and enjoy a dining experience like none-other.

lontara.com.au
1 Bedford Ave, Rottnest Island

Terms and Conditions apply. Subject to availability. Visit for some day return ferry and discounted tours only. Book out here please use website. Closes must be quoted prior to payment. Return of 10 persons and add for each booking. Please check our website for up to date information. Valid until 30 September 2024. Visit our website for the full list of dates. Ferry will not be in operation with any other ferry. Perth departures and returns are subject to change without notice. Daily departures from Perth and Fremantle (B-SHEP AND NORTHPORT TERMINALS) 1300 467 688 reservations@rotnnestexpress.com.au WWW.ROTTNESTEXPRESS.COM.AU



15% OFF FERRY FARES & DAY TOURS SAME PROMO CODE: HELLOROTTOIS



WADJEMUP ROTTNEST ADVENTURE

Join a 90-minute thrilling boat tour and explore the island's wild side. (Seasonal)

DISCOVER ROTTNEST

Sit back and relax on a 90-minute bus tour around the island.

EXPERIENCE ROTTNEST

Hire a bike and explore the island at your own pace.

ROTTNEST ISLAND

30 minutes to

WADJEMUP ROTTNEST ISLAND

EXPLORE INDULGE UNWIND!

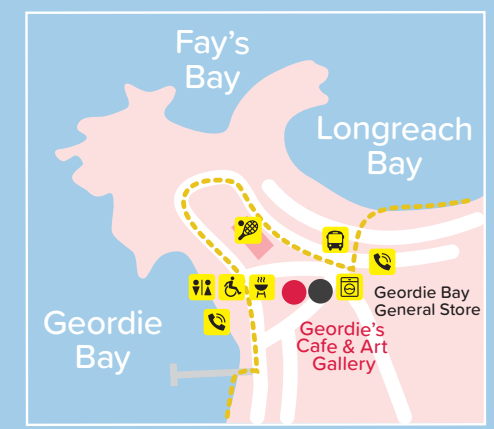
PERTH'S ISLAND PARADISE

YOUR FREE FOLD OUT MAP & GUIDE TO WADJEMUP ROTTNEST ISLAND

FREE MAP



ROTTNEST ISLAND



WADJEMUP BIDI WALK TRAILS

- Ngank Yira Bidi (9.4km)
- Gabbi Karniny Bidi (9.7)
- Wardan Nara Bidi (10km)
- Karlinyah Bidi (5.9km)
- Ngank Web Bidi (7.6km)

KEY

- Toilets
- Accessibility Toilets
- Baby Change Facility
- Drinking Fountain
- Surfing
- Snorkeling
- Barbeque
- Island Explorer Bus Stop
- Tennis Courts
- Laundromat
- Fishing

CYCLING ROUTES

- All routes leave from Thompson Bay
- Bike Ride 1 (4km, 30 mins)
 - Bike Ride 2 (10km, 1.5 - 3 hours)
 - Bike Ride 3 (22km, 3 - 5 hours)
- Please do not touch the wildlife
- Please do not feed the wildlife

ISLAND ACTIVITIES

- Rottnest Island Public Golf Course
- Wadjemup Museum for Children
- Pilot Boathouse
- Boating West
- Aquaplay Rottnest
- Wadjemup Museum
- Wadjemup Bidi Walk Trail
- Rottnest Snorkel
- Family Fun Park
- Rottnest Movies
- Pedal & Flipper
- Skydive Geronimo Rottnest

ISLAND TOURS

- Go Cultural Aboriginal Tour
- Guided Walking Tours
- Quokka Coaches
- Capture the Light Photography Tours
- Charter 1
- Rottnest Cruises
- Segway Tours
- Rottnest Air Taxi
- Swan River Seaplanes

SHOPPING & BEAUTY

- Indianic Rottnest Island
- Island Gypsy
- Keiko Uno Jewellery

OTHER

- Police & Nursing Post
- Visitor Centre
- Meeting Post
- Chapel
- Main Bus Stop
- Ticket Booth
- Holy Trinity Church
- Settlement Railway Station

USEFUL PHONE NUMBERS

- Emergency 000
- Nursing Post 9292 5030
- Perth Airport 9478 8888
- Police 131 444
- Rangers 9372 9788
- Rottnest Island Visitor Centre 9372 9730
- WA Visitor Centre 9483 1111

EAT & DRINK

- Pinky's Rottnest Island
- Frankie's on Rotto
- The Lane
- Boost Juice
- Simmo's Icecream
- Subway
- Rottnest Bakery
- Rottnest General Store
- Geordie Bay General Store
- Geordie's Cafe & Art Gallery
- Lexi's on Rotto
- The Mezz
- Dome Cafe
- Isola Bar e Cibo
- Hotel Rottnest
- Lontara

IMPORTANT INFORMATION

- The island is a culturally significant site for Aboriginal people so treat Aboriginal and heritage sites with respect
- Help protect the wildlife by not feeding or touching
- Leave only footprints, take your rubbish with you and help keep the island beautiful
- Take care when swimming, avoid cliff edges, watch for currents, waves, boats and wildlife; please obey all warning signs
- Protect the flora by staying on cycle and walk paths
- Lighting fires is prohibited
- On the spot fines of \$150 may apply to anyone seen interfering with animals (including feeding)
- Stay hydrated and take water with you; there is limited water outside the settlement
- Bring your own reusable water bottle and coffee cups to the island, and avoid single use plastics

PUBLISHER'S NOTE

This map is intended as a guide only. Some businesses may close during winter so please check with the Rottnest Island Authority for opening times depending on the time of year. No guarantee is given that services may vary or change throughout the year. Cover image credit: Tourism WA.

Edition 7, published October 2023

W: www.helloperth.com.au

@helloperth #helloperth

ACCOMMODATION

- 4 Bed
- 6 Bed
- 8 Bed

KEY

- Toilet
- Wheelchair Access Units
- Barbeque
- Phone
- Laundry
- Baby Change Facility
- Footpath
- Stairs

Discovery Rottnest Island

Samphire Rottnest