

experienceperthhills.com.au

ARMADALE
GIDGEGANNUP
SERPENTINE
JARRAHDALE
KALAMUNDA
MUNDARING

UP
FOR
TIME
DOWN

Hello
Perth

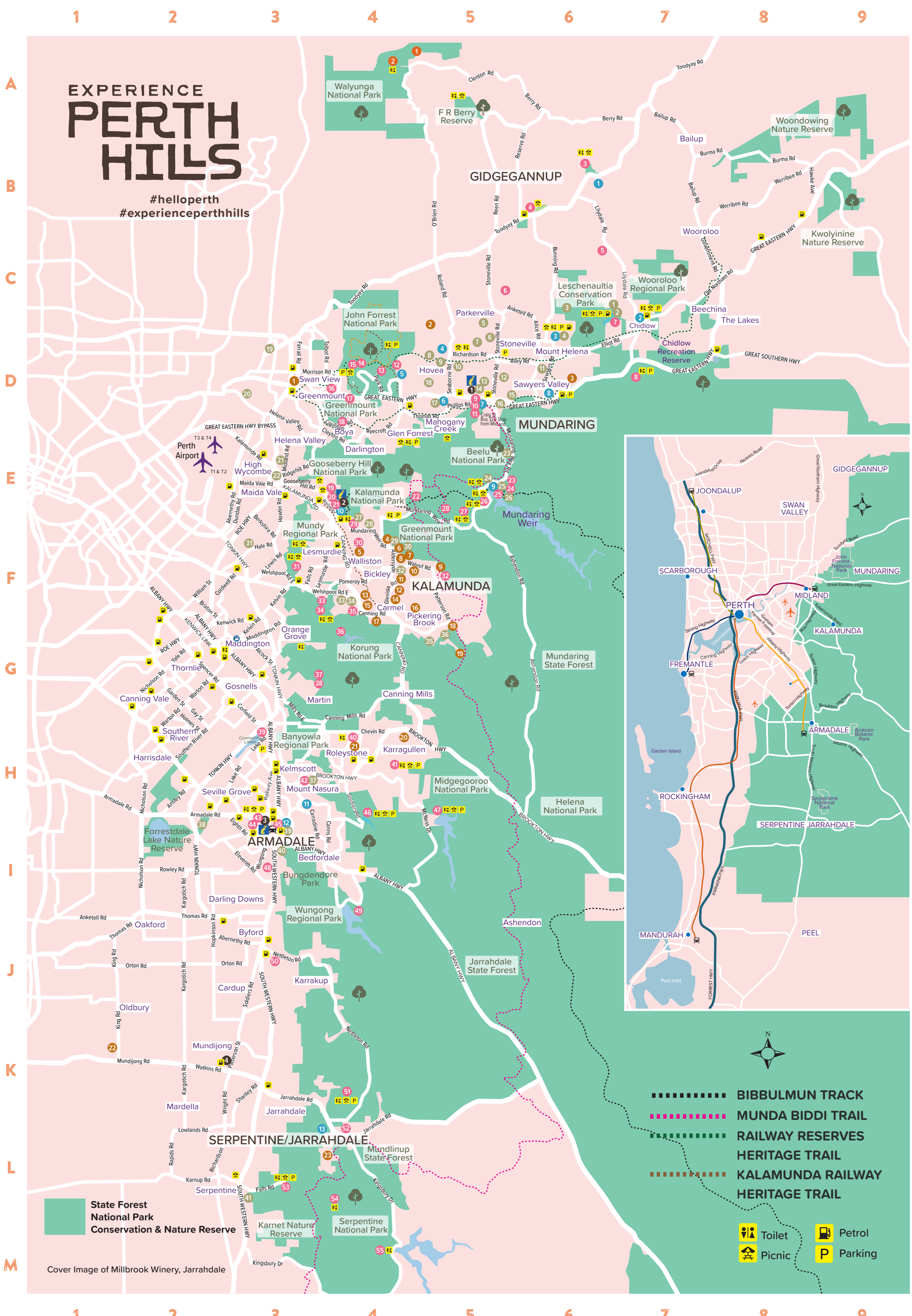
EXPLORE
INDULGE
UNWIND!

YOUR FREE
FOLD OUT
MAP &
GUIDE TO
THE PERTH HILLS

PERTH'S
CHARMING
COUNTRY
EXPERIENCE

PERTH HILLS

FREE
MAP



EXPERIENCE
PERTH
HILLS

#helloperth
#experienceperthhills

State Forest
National Park
Conservation & Nature Reserve

Cover Image of Millbrook Winery, Jarrahdale

GETTING THERE

Although covering a vast area, the Perth Hills Region is mostly within a half to one hour drive from the Perth City. Travelling by car is the easiest way to see and experience this beautiful countryside however let us share some alternative options! Why not take a day tour and take the driving hassle out of your day? ... especially if your trip involves sampling some locally made wine!

If you are planning to self drive, the Perth Hills is teeming with awe inspiring scenic drives. Roads are wide and easy to drive, and WA observes the same driving rules as the rest of Australia; vehicles travel on the left hand side of the road. Hire a car from any number of car hire companies; in particular please see the Aries Car Rental listing over the page.

You can also visit www.transperth.wa.gov.au/journey-planner and simply enter your destination and it will suggest bus routes into the Perth Hills; the website also features language interpretation. The Midland and Armadale Train Line can only take you so far, but then you'll need to make alternative transport arrangements. Depending on your destination contact the Visitor Centres listed on this map and the helpful staff will be able to assist you with any enquiries regarding your visit, including transport, accommodation and itineraries.

THINGS TO SEE & DO

WALK OR CYCLE some of Western Australia's top trails. **EXPERIENCE** the thrill of Mountain Bike Riding. **FOLLOW** the wine trails to taste local wines, cider & produce. **RELAX** with a hearty pub meal in historic taverns. **ENJOY** a peaceful horse ride through scenic forest. **UNWIND** in a day spa surrounded by native bush. **VISIT** Araluen Botanic Park for the stunning gardens. **PICNIC** by the lake at Lake Leschenaultia. **LEARN** about the interesting history at local museums. **TAKE** photos at picturesque lookouts during a scenic drive. **EXPLORE** the iconic Munding Weir Precinct. **BROWSE** arts galleries and studios. **COOK** a BBQ at the John Forrest National Park. **MARVEL** at the majestic Serpentine & Lesmurdie Falls. **INDULGE** in local cuisine at one of the award winning restaurants. **TOUR** the universe at the Perth Observatory. **PURCHASE** gifts and souvenirs from local markets and artisans.

MARKETS

Swan View Night Markets <i>December to March</i>	Bedfordale Bush Markets <i>Fourth Saturday of every month</i>
Chidlow Village Markets <i>Third Saturday of every month</i>	Kalamunda Farmers Market <i>Every Sunday morning</i>
Perth Hills Artisan Markets <i>March, May, September October and November</i>	Kalamunda Night Market <i>Last Friday every month October to April</i>
Kalamunda Artisan Market <i>First Saturday of every month</i>	Munding Sunday Markets <i>Second Sunday of every month, (except Jan & Feb)</i>
Mundijong Markets <i>First and Third Wednesday and Fourth Sunday of every month</i>	Forrestfield Night Market <i>Second Friday of the month in spring and early summer</i>
Munding Garden and Farmers Markets <i>Every Saturday</i>	Serpentine Jarrahdale Farmers Market <i>Every Saturday morning</i>
For dates, times and further information, visit experienceperthhills.com.au	

ANNUAL EVENTS

Munding Arts Centre <i>New exhibitions bi-monthly</i>	Bickley Harvest Festival <i>May</i>
Australia Day in Armadale <i>January</i>	Gourmet in the Park Glen Forrest <i>April</i>
Spring into Armadale <i>August to November</i>	Hills Billy Cart Festival <i>October</i>
Perth Hills Spring Festival <i>October to November</i>	Munding Hills Open Studios <i>November</i>
Gidgigannup Show <i>October</i>	Darlington Arts Festival <i>November</i>
Kalamunda Open Studios <i>April and October</i>	Perth Hills Artisan Markets <i>December</i>
For dates, times and further information, visit experienceperthhills.com.au	

VISITOR CENTRES

- 1 Perth Hills Mundaring Visitor Centre D5
- 2 Perth Hills Kalamunda Visitor Centre E4
- 3 Perth Hills Armadale Visitor Centre H3
- 4 Serpentine Jarrahdale CRC (Monday-Friday only) K2

WINERIES, CIDERIES & BREWERIES

- | | |
|-------------------------------|-------------------------------|
| 1 Dingo Brewery D3 | 13 Fairbross Wines F4 |
| 2 Malmalling Vineyard C4 | 14 Myattfield Vineyards F4 |
| 3 Lion Mill Vineyards D6 | 15 Toton Vineyard & Winery F4 |
| 4 Aldersde Estate E4 | 16 Kenbrook Shiraz F4 |
| 5 Caridenn Homestead Wines F4 | 17 Carmel Cider Co. F4 |
| 6 Ashley Estate Winery F4 | 18 CORE Cider House G5 |
| 7 Packing Shed @ Lawnbrook F4 | 19 La Fattoria Perth Hills G5 |
| 8 Brookside Vineyard F4 | 20 Naked Apple Cider H4 |
| 9 Hainault Vineyard F5 | 21 Roleystone Brewing Co. H4 |
| 10 HHH Spirits F4 | 22 King Road Brewery K2 |
| 11 Plume Estate Vineyard F4 | 23 Millbrook Winery L4 |
| 12 Cosham Wines F4 | |

HISTORIC PUBS & TAVERNS

- | | |
|-----------------------------|-----------------------------|
| 1 Noble Falls Tavern B6 | 8 Sawyers Valley Tavern D6 |
| 2 The Chidlow Tavern C7 | 9 Munding Weir Hotel E5 |
| 3 Mt Helena Tavern D6 | 10 Kalamunda Hotel E4 |
| 4 The Parkerville Tavern D5 | 11 Last Drop Elizabethan H3 |
| 5 John Forrest Tavern D4 | 12 Ye Olde Narragin Inne I3 |
| 6 Inn Mahogany Creek D5 | 13 Jarrahdale Tavern L4 |
| 7 The Mundaring Hotel D5 | |

PLACES TO STAY

- | | |
|--|---|
| 1 Camp Leschenaultia C7 | 24 Department of Education
Hostel E5 |
| 2 Lake Leschenaultia Campsite C7 | 25 Munding Weir Hotel E5 |
| 3 Eversprings Glamping C6 | 26 Perth Hills Discovery
Centre Campsite E5 |
| 4 Amaro Retreat & Spa D6 | 27 Rosebridge House B&B E4 |
| 5 Kangaroo Valley Homestead C5 | 28 Perth Hills
Accommodation E4 |
| 6 Chalets on Stoneville D5 | 29 Edenside Cottage F4 |
| 7 Callaway House Guest
Stay D5 | 30 Bickley Valley Retreat F4 |
| 8 Sunseekers D5 | 31 Discovery Parks
Perth Airport F3 |
| 9 Quenda Guesthouse D5 | 32 Bickley Valley Cottage F4 |
| 10 Cockatoo Hills Apartment D5 | 33 Anapana Ridge Guest
House F4 |
| 11 Hillborne Cottage D6 | 34 Gumnuts Guest House F4 |
| 12 Quiet Escapes D5 | 35 Hidden Valley Eco Lodges
& Day Spa G5 |
| 13 Nathanael's Rest Retreat D5 | 36 Farview Guest
Accommodation G5 |
| 14 Perth Hills Caravan Park &
Market Village D5 | 37 Avocados Accommodation H4 |
| 15 Travellers Rest Motel D5 | 38 Coranda Lodge I2 |
| 16 Mundaring B&B D5 | 39 Heritage Country Motel I3 |
| 17 Inn Mahogany Creek D5 | 40 Hillside Garden Village I3 |
| 18 Gumleaf Cottage Farmstay D5 | 41 Serpentine Park Home
& Leisure Village L3 |
| 19 Big 4 Perth Midland
Tourist Park D3 | |
| 20 Quest Midland D3 | |
| 21 Banksia Tourist Park E3 | |
| 22 Advent Park Caravan Park and
Campground E3 | |
| 23 The Lavender Patch E5 | |

ATTRACTIONS

- | | |
|--|--|
| 1 Parua Wildlife Sanctuary A4 | 28 Kalamunda Mountain
Bike Park E5 |
| 2 Walyunga Lookout A4 | 29 Bibbulmun Track
Northern Terminus F3 |
| 3 Noble Falls & Picnic Area B6 | 30 Kalamunda Water Park F4 |
| 4 Gidgigannup Bakery & Cafe B6 | 31 Lesmurdie Falls F3 |
| 5 Karakamia Wildlife
Sanctuary C6 | 32 Perth Observatory F5 |
| 6 Zia Park Horse Trail Riding C5 | 33 Kanyana Wildlife F4 |
| 7 Lake Leschenaultia C6 | 34 Bickley Reservoir F4 |
| 8 Forsyth's Mill Mountain Bike
Area D7 | 35 Masonmill Gardens F4 |
| 9 Munding Arts Centre D5 | 36 Victoria Dam G4 |
| 10 Munda Biddi Trail Northern
Terminus D5 | 37 Ellis Brook Valley G4 |
| 11 Munding Sculpture Park D4 | 38 Sixty Foot Falls G4 |
| 12 Hovea Falls D4 | 39 Champion Lakes Interpretive
Centre H3 |
| 13 Glen Brook Dam D4 | 40 Raeburn Orchard H4 |
| 14 National Park Falls D4 | 41 Araluen Botanic Park H4 |
| 15 Swan View Tunnel D4 | 42 Kelmscott Migrant Park H3 |
| 16 Blackboy Hill
Commemorative Site D4 | 43 Minnawarra Historic
Precinct H3 |
| 17 The Goat Farm Mountain
Bike Park D4 | 44 History House Museum H3 |
| 18 Mountain Quarry E4 | 45 Bert Tyler Machinery
Museum H3 |
| 19 Zig Zag Scenic Trail E4 | 46 Churchman Brook Dam H4 |
| 20 Kalamunda History Village E4 | 47 Canning Dam H5 |
| 21 Zig Zag Gallery E4 | 48 Armadale Reptile Centre I3 |
| 22 Calamunda Camel Farm E5 | 49 Wungong Dam I4 |
| 23 Kookaburra Outdoor Cinema E6 | 50 Cohunu Koala Park J3 |
| 24 Munding Weir Gallery E6 | 51 Langford Park L4 |
| 25 Perth Hills Discovery Centre E5 | 52 Jarrahdale General Store and
Old Post Office Museum L4 |
| 26 Munding Weir and No. 1
Pump Station E5 | 53 Serpentine Falls L3 |
| 27 Golden View Lookout F4 | 54 Pipehead Dam L4 |
| | 55 Serpentine Main Dam M4 |

PUBLISHER'S NOTE

Every effort has been made to be as accurate as possible with locations, however due to the huge number of venues, the exact position is not always possible; please use this map as a guide only. Please note also that smaller venues (such as cafes) cannot be featured on the map due to space availability.

HELLO & WELCOME!



During your stay in Perth, the Perth Hills region would love to welcome you either for a day trip or extended stay to relax and enjoy a charming country experience. Within 45 minutes east of the city, rolling hills and picturesque valleys await you where you can enjoy wine tasting at family run wineries, walk trails through beautiful forests and falls, botanic parks or National Parks, award winning restaurants serving up local produce, or stop for a hearty lunch in the state's oldest pubs. With plenty of accommodation choices, why not stay for a few days to explore this wonderful region? See the following selection of attractions and activities and the maps overleaf to help you get around. Don't forget to follow and tag us on your social media posts! #helloperth

www.helloperth.com.au

LAKE LESCHENAULTIA



Lake Leschenaultia, less than an hour's drive east of the city, is a perfect family day out or camping getaway all year round. The white sandy beaches and calm waters provide an ideal spot for water activities with canoes and paddleboards available for seasonal hire. Enjoy a stroll around the lake, or hone your skills on the MTB trail network or pump track. Reflections Café is open (see website for details) for takeaway meals, ice-creams and drinks or enjoy the free barbeque facilities before settling back on shaded lawns to watch the children play.

www.mundaring.wa.gov.au/Recreationevents/Lake Ph: 9290 6736

2135 Rosedale Road, Chidlow

NAKED APPLE CIDER



Set on 6.4 hectares of lush gardens and native bushland in Karragullen, Perth Hills, Naked Apple Cider House is a popular, family-friendly venue featuring expansive gardens and an adventure playground for the kids. It is open five days a week, Wednesday to Sunday. The venue features four main areas - the restaurant, the deck, the courtyard and the gardens. The All Day Menu features modern Australian cuisine and incorporation of apple cider into a selection of the dishes. Naked Apple ciders are 100% natural and are made using wild fermentation. They do not contain any preservatives or additives - only apples and love!

www.nakedapple.com.au Ph: 9496 1138

1088 Brookton Hwy, Karragullen

GIDGEGANNUP NOBLE FALLS & FR BERRY RESERVE



Gidgegannup, part of Experience Perth Hills, is only a 30 minute drive from the Perth CBD and is renowned for its natural bushland, scenic walking trails, spring wildflowers, tumbling waterfalls, bird watching and rural charm. Choose to walk in nature and picnic at wildflower hotspots FR Berry Reserve and Noble Falls. Noble Falls is a perfect destination for a trail walk, a family picnic, or BBQ by the picturesque waterfalls. Surrounded by tranquil jarrah, marri and blackbutt bushland, Noble Falls is only 5.5 kilometres from the rural townsite of Gidgegannup. During your visit, support local businesses with a stop at the bakery and tavern or choose to overnight in one of the many nearby charming and family-friendly accommodation options.

www.swan.wa.gov.au Ph: 9207 8899

Toodyay Road, Gidgegannup

OFF THE BEATEN TRACK WA



Off The Beaten Track WA is Perth's leading Hiking Experience & Adventure Tour operator, providing guests with over 70 safe, fun, inclusive experiences in a fully supported environment. Experience the exceptional, from rugged coastal beauty to deep immersion in ancient forests, adventurous day tours on the water or from high in the treetops! OTBT is passionate about providing quality, unique and unforgettable nature-based experiences and are committed to best practice with all environmental aspects to ensure we leave a minimal footprint. Restore your soul now with one of our experiences!

tracy@offthebeatentrackwa.com.au Ph: 0417 128 896

www.offthebeatentrackwa.com.au

ARIES CAR RENTAL



If you plan to self drive and need a car hire to explore the beautiful Perth Hills region, Aries Car Rental offers inexpensive Perth car rentals for a variety of vehicle types including small to family sized cars, 7/8 seat SUVs and MPVs and even a 12 seater minibus hire. They even have a luxury fleet of Mercedes-Benz, BMW and Mini. Staying longer? They have both short and long term rental options available. Open 7 days and conveniently located in the Perth CBD and Kewdale, the latter is only five minutes from the International or Domestic airports, and they offer a shuttle service. Visit their website to explore their range to best suit your car hire needs.

www.ariescarrental.com.au Ph: 9325 4110

166 Adelaide Terrace, East Perth

THE MUNDARING HOTEL

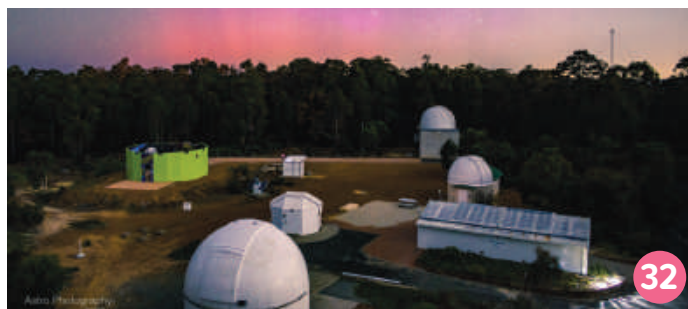


The Mundaring Hotel is centrally located in the beautiful town of Mundaring, in the Perth Hills. Established in 1899, the recently refurbished Mundaring Hotel boasts a family-friendly restaurant, bar and beer garden offering delicious home-cooked meals with a European influence. A perfect venue for anyone wishing to explore the local area on foot or by bike, with the famous Bibbulmun Track being close by, as well as numerous activities available on its doorstep. Open 7 days a week, offering lunch and dinner with an A La Carte Menu, Kids Menu, Seniors Menu, Function Menu for larger groups, Weekly Musicals and live music both Friday night and Sunday afternoons.

www.mundaringhotel.com.au Ph: 9295 1006

Cnr Nichol & Jacoby Street, Mundaring

PERTH OBSERVATORY



Perth Observatory is Western Australia's oldest observatory, located in beautiful Bickley. It has served for over 125 years and remains actively involved in scientific and historical public outreach. Our Night Sky Tours take visitors on a grand tour of the universe through a wide range of modern and historical telescopes, including the largest public-viewing telescope available in WA. Our Guided Day Tours take visitors on a fascinating journey through the Observatory's pivotal role in the development of our state, including our museum, rare clocks, and historical Lowell and Astrograph telescopes.

www.perthobservatory.com.au Ph: 9293 8255

337 Walnut Road, Bickley

PERTH HILLS VISITOR CENTRE



A trip to Perth Hills is a must when visiting WA. For walk trails - from a hike along the top of the range for views to the City to a stroll along a winding track through the forest. For something tasty, the Bickley Valley Wine Trail meanders through picturesque valley scenery; choose from 13 wineries and 2 cideries. Many offer food, from simple tasting plates to full a la carte menus. For art and history - the Zig Zag Gallery for inspiring exhibitions and the Kalamunda History Village - WA's largest folk museum. All this and so much more...

www.experienceperthhills.com.au Ph: 9257 9998

50 Railway Road, Kalamunda

ROAD SAFETY COMMISSION



In Australia, all vehicles drive on the left side of the road. If you are not used to driving on the left tape a note on your dashboard to remind you to stay on the left. It can be exciting to see Australian wildlife, but beware of roaming animals such as kangaroos and cattle, drive slowly and if necessary put on your brakes and sound your horn. Remember to take regular breaks from driving to refresh and admire the sights.

www.rsc.wa.gov.au Ph: 1300 999 772

rsc.wa.gov.au

ARALUEN BOTANIC PARK



Let your senses wander in natural beauty and old-world charm of Araluen Botanic Park. The lovingly restored 1930's heritage log cabins, stone paths and magnificent column pergolas set the scene for every season. The Park features an impressive collection of Camellias, Roses and other exotic plant species. Pack a picnic and sit by the running water of Stinton Creek while you reconnect with nature. Special events are held regularly at the Park; there is always something happening at Araluen.

www.araluenbotanicpark.com.au Ph: 9234 2200

362 Croyden Road, Roleystone

CALAMUNNDA CAMEL FARM



Located in the hills east of Perth, you will find one of the most enjoyable and unique outdoor experiences. Partake in one of our popular Camel Treks through our farm and native bush land; the Introductory Ride, ½ Hour and a full 1 Hour Ride. Calamunda Camel Farm provides an exceptional opportunity to discover the rich variety of flora and fauna while enjoying a relaxing Camel Ride with family and friends. Please note that bookings are essential for all Camel Rides. Light refreshments available from our kiosk. Open Thursday to Sunday. Email: camelbooking@gmail.com

www.camefarm.com Ph: 9293 1156

361 Pauls Valley Road, Pauls Valley

PERTH HILLS ARMADALE VISITOR CENTRE



Armadale is a rural escape, only 40 minutes from Perth, but feels worlds away from the hustle of city life. A short drive will transport you to a natural oasis, set in the Perth foothills and surrounded by tranquil bushland of national parks, orchards, native west Australian wildlife and places where you can capture epic photoworthy moments. If you've timed your day trip from Perth well, you can spend the evening wandering a seasonal night market or indulge your taste buds at a local restaurant. If you would like help planning your day trip, contact the Perth Hills Armadale Visitor Centre and they will be happy to help you plan an itinerary.

www.perthhillsarmadale.com.au Ph: 9394 5410

40 Jull Street, Armadale

ZIA PARK HORSE TRAILRIDING



Visit Zia Park for an unforgettable Aussie horse trailriding experience. Just 40 minutes from Perth, over 25 friendly trailriding horses invite you to join a fun and safe bush excursion. Follow an experienced horseriding guide, who will show you the local flora and fauna and you may even see the resident kangaroos and echidnas. Opt for a private ride or join a group, with a special kid-friendly option also available. With hundreds of 5-Star ratings, we are open every day. 10% off with discount code HILLSMAP when booked online.

www.ziapark.com.au Ph: 0457 588 405

8410 Stoneville Road, Gidgegannup

JARRAHDALE TAVERN



The historic Jarrahdale Tavern was established in 1886 as a "Wayside Hotel" to support the numerous jarrah mills that operated in the town. Now a heritage tourist town, the Jarrahdale Tavern welcomes all patrons from near and far for cold beverages and freshly prepared meals. We offer; large undercover verandahs, beer garden overlooking the children's outdoor playground, dining room and public bar. Please like our Facebook page to be kept up to date with weekly specials, promotions and events. Open 7 days a week from 11.30am until late, lunch: 12 noon to 2.30pm, dinner: 5pm to 8pm. Enjoy Live music every Sunday from 12pm to 4pm.

www.facebook.com/Jarrahdale-Tavern Ph: 9525 5015

640 Jarrahdale Road, Jarrahdale

MILLBROOK WINERY



Millbrook is a multi-award winning boutique winery and two hatted restaurant in the historic town of Jarrahdale. 40 minutes from Perth. It is situated on the picturesque Chestnut Farm, a property that backs on to the Serpentine River and nestles among jarrah forests, with stunning vistas of the rolling landscape. In addition to the vines lining the steep slopes, the Millbrook property incorporates an active orchard, an olive grove and a one-acre garden featuring over 100 varieties of heirloom vegetables, which are handpicked daily and feature prominently in the Millbrook restaurant's magnificent seasonal menu. Bookings essential please.

www.millbrook.wine Ph: 9525 5796

Old Chestnut Lane, Jarrahdale

SHIRE OF SERPENTINE JARRAHDALE



Start your day in Byford, enjoying a trail of quirky street sculptures by internationally-renowned artist Len Zuks. Continue to peaceful Mundijong, where native wildflowers line the path along Soldiers Road and Paterson Street. Grab lunch in the historic town of Jarrahdale, and experience nature at its best with our stunning walking, mountain biking or bridle trails. Admire the spectacular Serpentine Falls with the company of our friendly western grey kangaroos. Grab a coffee at Serpentine Dam, nestled in the forested Darling Scarp. Finish your day watching the sunset at Kingsbury Lookout with a soundtrack of chirping birds as you admire the distant views of Perth.

www.sjshire.wa.gov.au Ph: 9526 1111

6 Paterson Street, Mundijong



PERTH HILLS ACCOMMODATION

Our semi rural self contained getaway accommodation, and B&B accommodation offers the option of romantic and intimate accommodation in a well appointed railway carriage, or room for friends or family in a full self contained and charmingly furnished character cottage. Close to the Perth CBD, and only 20 minutes from Perth Airport.

Ph: 0411 046 903
www.perthhillsaccommodation.com.au

30 Mundaring Weir Rd, Kalamunda



HHH SPIRITS

HHH is a boutique Gin and Whisky distillery set in the Bickley Valley of Western Australia. The HHH spirits are produced with meticulous attention to detail - a true labour of love and passion for creativity. Book a tour to the workshop of HHH to learn about the HHH stills, the bottling and labelling process, and how spirits are made.

Ph: 0416 662 188
www.hhhspirits.com.au

90 Walnut Road, Bickley



QUIET ESCAPES

Quiet Escapes offers luxury accommodation to suit everyone. Enjoy our characterful Cottages or our circa 1902 converted South Australian Train Carriage in Mundaring, Perth Hills. Whether your looking for the perfect venue or a romantic getaway or a base to explore the Perth Hills, one of our three luxury accommodations is sure to suit. Visit our website for special deals.

Ph: 0430 711 970
www.quietescapes.com.au

1590 Stoneville Rd, Mundaring



PERTH HILLS E-MOUNTAIN BIKE TOURS

Enjoy a guided eMountain biking experience in the stunning Perth Hills on one of the best pedal-assisted eBikes on the market, Giant E-bike. Our local and trained guides will take you to some of the most picturesque views the Perth Hills has to offer, whether its adventure you're after or a casual late afternoon ride, catering for all ages - 16 to 99 - and fitness levels. Call for a fun day out!

Ph: 0448 611 566
www.perthhillsmtbtours.com.au



DINGO BREWERY

Come experience the relaxed casual atmosphere of our award-winning micro-brewery. We are Dingo Brewery Midvale, a family-friendly Brew On Premises brewery. At our Brewery in Midvale, you can enjoy our tasting paddles, plus full glasses of our beers. Takeaway Beers are also available in our freshly filled 500ml cans and 2L growler flasks.

Ph: 9274 5600 www.dingobrewery.com.au

17-21 Farrall Road, Midvale




LAST DROP ELIZABETHAN

During your trip to the Perth Hills, visit a beautiful old English Tudor pub, the Last Drop Elizabethan. Operating for 27 years, we offer a huge selection of speciality handcrafted beers and a hearty pub meal, set in stunning surrounds. Open 7 days. Winners of the Best Outdoor Area Award at the AHA Hospitality awards for excellence 2021!

Ph: 9399 4531
www.lastdropelizabethan.com

25 Canns Road, Bedfordale




ROSEBRIDGE HOUSE BED & BREAKFAST

Nestled on the edge of Gooseberry Hill National Park and within walking distance of Kalamunda, a charming country village and only 10-15 minutes' drive from Perth Airport, you will find Rosebridge House B&B. This charming 1920s colonial home offers six furnished bedrooms with brass beds, luxurious bed linen, and ensuite bathrooms.

Ph: 9293 1741
www.rosebridgehouse.com.au

86 William St, Gooseberry Hill



ARMADALE REPTILE CENTRE

Opened to the public in 1995, the Armadale Reptile Centre houses a large variety of native reptiles and other Australian wildlife with over 70 different species on display including snakes, lizards, turtles, frogs, fruit bats, kangaroos, dingoes, emus, parrots and many more. We are open daily from 10am to 4pm, closed Wednesdays, (excl school hols).

Ph: 9399 6927
www.armadalereptilecentre.com.au

308 South Western Highway, Wungong




GIDGEGANNUP BAKERY & CAFE

Gidgegannup Bakery & Cafe is a hidden treasure located in the Perth Hills, 20mins from Midland. Offering an extensive selection of continental and European style cakes, great coffee, delicious quiches and fresh filled rolls; plus don't miss out on our meat pies, rated amongst the best in the country according to the "Pie Buyers Guide To Australia".

Ph: 9574 6023
www.facebook.com/gidgegannupbakery

1/2125 Toodyay Road, Gidgegannup



KOOKABURRA OUTDOOR CINEMA

From November to April, watch the latest movies under the stars with the Perth Hills state forest providing a dramatic background to the onscreen entertainment. Bring a picnic to enjoy before the show at one of the several picnic benches scattered around the grounds, or bring a blanket! Visit the website for movie choices and times.

Ph: 9397 7945
www.kookaburracinema.com.au

Allen Road, Mundaring