



OPEN EVERY DAY FOR FREE TASTINGS  
Cafe open Tuesday to Sunday  
Enjoy Nougat, Nuts, Gelato, Coffee, Biscotti & more.

## DISCOVER AWARD-WINNING NOUGAT AND NUTS ALL IN ONE LOCATION.

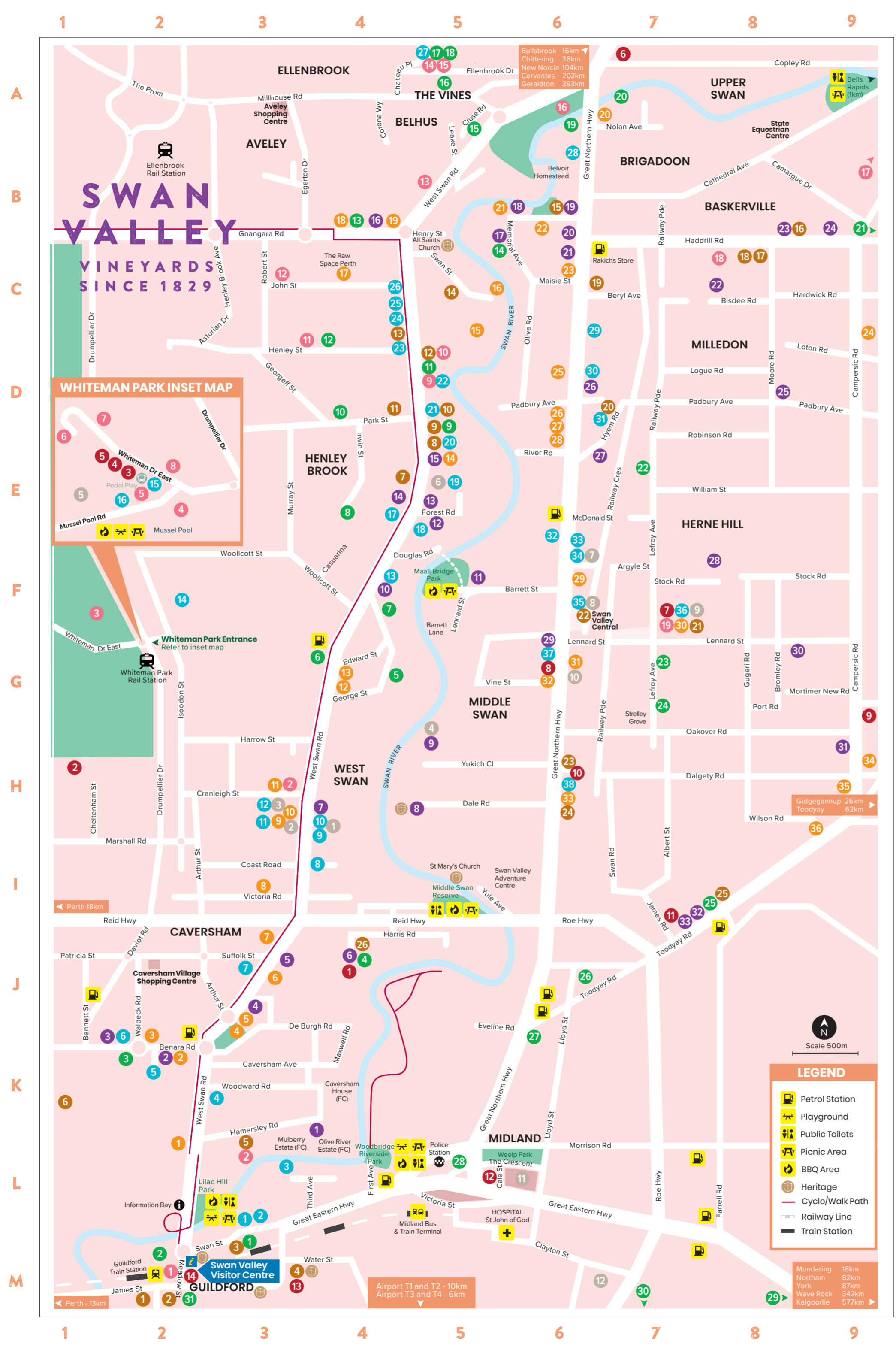


*Hello Perth*  
EXPLORE INDULGE UNWIND!  
PERTH'S HISTORIC WINE REGION  
YOUR FREE FOLD OUT MAP & GUIDE TO THE SWAN VALLEY

## WURERUP SWAN VALLEY



FREE MAP



## THINGS TO SEE & DO

**TASTE** your way around the Swan Valley enjoying the many free samples of wine, chocolate, nougat, nuts or cheese. **INDULGE** in succulent, local produce over a long lunch under the vines. **ENJOY** a scenic drive through lush, rustic landscapes. **EXPLORE** the historic town of Guildford, visiting the many heritage sites. **TAKE** a wine tour to experience the many wineries, breweries and distilleries in one day. **RELAX** with a hearty pub meal in historic taverns. **VISIT** and interact with the native wildlife at Caversham Wildlife Park. **HIKE** or stroll along the many picturesque walk trails in the region. **PICNIC** by the banks of the Derbarl Yerrigan Swan River. **CYCLE** along the Swan Valley Heritage Cycle Trail to appreciate the natural elements and uniqueness that is the Swan Valley. **LEARN** about the interesting history of local towns, people and Indigenous culture at the museums. **BROWSE** art galleries, studios, markets and locally made wares and purchase a gift or souvenir.

### RESTAURANTS & CAFES

- |                                    |                                     |
|------------------------------------|-------------------------------------|
| 1 Little Guildford L3              | 20 The Naked Fox E5                 |
| 2 Padbury's Cafe Restaurant L3     | 21 The Henley Brook D5              |
| 3 Riverside at Woodbridge L3       | 22 Gerry's Deli & Pizzeria D5       |
| 4 Bella's on Caversham J2          | 23 The Swan Indian D4               |
| 5 Spice in the Valley K2           | 24 Old Young's Kitchen C4           |
| 6 Maison Saint-Honoré J3           | 25 SubZero Gelato C4                |
| 7 Pasta in the Valley J3           | 26 The Olive Estate Tearooms C4     |
| 8 Jugnu Cafe & Restaurant I3       | 27 The Vines Resort A5              |
| 9 Royal Tarka Indian Restaurant I4 | 28 Stewarts A6                      |
| 10 Yahava KoffeeWorks H4           | 29 The Tandoori Bistro C6           |
| 11 Margaret River Chocolate Co. H3 | 30 The Tapas Bar D6                 |
| 12 Lavender Bistro & Boutique H3   | 31 Oscars in the Valley D6          |
| 13 Stella Gelato F4                | 32 The Coffee Hut E6                |
| 14 Zambrero Brabham F2             | 33 Joey's Diner E6                  |
| 15 Village Cafe E2                 | 34 Shalom Ladies Cafe & Boutique E6 |
| 16 Kings Urban Cafe E2             | 35 Champagne & Gumboots F6          |
| 17 The Abbey at Chesters E4        | 36 Swan Valley Settlers Market F7   |
| 18 Mrs Rabbit Tearooms E4          | 37 The Silver Oak Cafe & Rest. G6   |
| 19 Swan Valley Station E5          | 38 Taylors in the Valley H6         |

### BREWERIES, PUBS & DISTILLERIES

- |                                    |                                      |
|------------------------------------|--------------------------------------|
| 1 The Guildford Hotel M2           | 14 Funk Brewshed C5                  |
| 2 The Stirling Arms Hotel M2       | 15 Harris Organics Wine & Spirits B6 |
| 3 Rose & Crown M3                  | 16 Txoko Brewing B8                  |
| 4 The Woodbridge Hotel M3          | 17 Slumdog Brewing B8                |
| 5 The Taphouse L3                  | 18 Baskerville Tavern B8             |
| 6 Collectors of Souls K1           | 19 Amber Ches Spiro's Distillery C6  |
| 7 Valley Social E4                 | 20 Limeburners & Giniversity D6      |
| 8 The Naked Fox Wine Bar & Cafe E5 | 21 Sin Gin Distillery F7             |
| 9 Duckstein Brewery D5             | 22 Damaged Goods Distilling Co. F6   |
| 10 The Henley Brook D5             | 23 Swan Valley Brewery H6            |
| 11 Bailey Brewing Co. D4           | 24 Great Northern Distillery H6      |
| 12 Mash Brewing D5                 | 25 The Tap I7                        |
| 13 Old Young's Distillery D5       | 26 Homestead Brewery I4              |

### WINERIES

- |  |                                      |
|--|--------------------------------------|
| 1 Riverbank Estate L3 ✗                | 18 Mann Winery B5                    |
| 2 Benara Wines & Vineyards K2          | 19 Harris Organic Wines & Spirits B6 |
| 3 Pinelli Estate Winery K1 ✗           | 20 John Kosovich Wines B6            |
| 4 Ambrook Wines J3                     | 21 Twin Hill Wines B6 ✗              |
| 5 Sandalford Wines J3 ✗                | 22 Lamonts Winery C8 ✗               |
| 6 Mandoon Estate J4 ✗                  | 23 Faber Vineyard B8 ✗               |
| 7 Lancaster Wines H3 ✗                 | 24 Swan Valley Wines B9 ✗            |
| 8 Nikola Estate H4 ✗                   | 25 Tyler's Vineyard D8 ✗             |
| 9 Oakover Grounds H5 ✗                 | 26 Olive Farm Wines D6               |
| 10 Ugly Duckling Wines F4              | 27 Talijanch Wines E7                |
| 11 Sitella Winery & Restaurant F5 ✗    | 28 Windy Creek Estate F8             |
| 12 Little River Winery E5              | 29 Jarrah Ridge Wines G6             |
| 13 Black Swan Winery & Restaurant E5 ✗ | 30 Valley Wines G8                   |
| 14 Headof Glen Winery E5               | 31 Vito Italia Winery H9             |
| 15 Albion on Swan E5 ✗                 | 32 Chapel Farm Estate I7 ✗           |
| 16 Edgecombe Winery B4                 | 33 Garbin Estate Wines I7            |
| 17 Upper Reach Winery & Cottage B5 ✗   | 34 With restaurant                   |

### PUBLISHER'S NOTE

Every effort has been made to be as accurate as possible with locations, however due to the huge number of venues, the exact position is not always possible; please use this map as a guide only. Please note also that smaller venues (such as pop ups or kiosks) may not be featured on the map due to space availability. Please note that some businesses are seasonal; please check individual opening hours.  
Edition 1 - Published December 2024 [helloperth.com.au](http://helloperth.com.au)

## A BRIEF HISTORY



The Swan Valley region is built on a unique history and heritage blending Indigenous, pioneering, colonial and southern European roots. The local Aboriginal people and custodians of the land are Whadjuk Noongar people who have inhabited the region for at least 40,000 years, and are the traditional owners of the Swan Valley. The historic town of Guildford in the Whadjuk region has always been an important meeting place for Noongar people, containing many campsites and spiritual sites which have been used by Noongars to the present day.

Captain James Stirling first sighted the Valley in 1827, and quickly realised the Valley's rich and fertile soils would sustain settlement; the first agricultural ventures by colonial settlers began in 1829. Southern European migrants arrived in the Swan Valley after World War I and then again after World War II, drawing upon their wine making skills from home to help make the Swan Valley what it is today.

## ATTRACTIONS

- |                                 |                                  |
|---------------------------------|----------------------------------|
| 1 The Guildford War Memorial M2 | 11 WA Reptile Park D3            |
| 2 The Taphouse Mini Golf L3     | 12 Swan Valley Cuddly            |
| 3 Whiteman Park F1              | 13 Animal Farm C3                |
| 4 Tractor Museum E2             | 14 Paintball Skirmish B5         |
| 5 Motor Museum E2               | 15 The Vines Golf & Mini Golf A5 |
| 6 Revolutions Museum D1         | 16 Kangaroo Safari A5            |
| 7 Vintage Tram & Train D1       | 17 Yagan Memorial Park A6        |
| 8 Caversham Wildlife Park E2    | 18 Bells Rapids B9               |
| 9 Supa Golf & Adventure Putt D5 | 19 The Lily Farm B8              |
| 10 LaserCorps D5                | 20 Swan Settlers Market F7       |

## PLACES TO STAY

- |                                   |                                 |
|-----------------------------------|---------------------------------|
| 1 Rose & Crown M3                 | 17 The Vines Resort A5          |
| 2 Guildford River Retreat M2      | 18 The Sebel Swan Valley A5     |
| 3 Discovery Parks Swan Valley K2  | 19 Brookleigh Estate A6         |
| 4 Maya Maya @ Mandoon Estate J4   | 20 Lot 113 Vineyard Accom. A7   |
| 5 Settlers Rest Farmstay G5       | 21 Swan Valley Heights B9       |
| 6 Swan Valley Tourist Park G4     | 22 Thie My Chree Retreat E7     |
| 7 El Dorado Farmstay F4           | 23 Strelley Brook Farmhouse G7  |
| 8 The Swan Valley Retreat E4      | 24 Aintree Cottage G7           |
| 9 Albion on Swan Chalets E5       | 25 Chapel Farm Getaways I7      |
| 10 Nivalis B&B D4                 | 26 Swan Valley Serviced Apts J6 |
| 11 The Swan Valley Hotel D5       | 27 Big4 Midland Tourist Park J6 |
| 12 Swan Valley Villas D4          | 28 Quest Midland L5             |
| 13 Swan Valley Sisters Chalets B4 | 29 Vermillion Skies M8          |
| 14 Upper Reach Cottage C5         | 30 Banksia Tourist Park M7      |
| 15 Poplars Farmstay A5            | 31 The Stirling Arms Hotel M2   |
| 16 Willow Cottage Swan Valley A5  |                                 |

## LOCAL PRODUCE

- |  |                                   |
|--|-----------------------------------|
| 1 The Grape Place L2                   | 19 Edgecombe Brothers B4          |
| 2 Banara Wines & Vineyards K2          | 20 Swanville Citrus A6            |
| 3 Grape Sensation K2                   | 21 Baudin's Macadamias B5         |
| 4 Baba & Dida's K3                     | 22 G&A Alvaro B6                  |
| 5 Caversham Rise J3                    | 23 Rangeview Vineyards C6         |
| 6 Kato's Swan Valley J3                | 24 Sorgiovanni's Produce C9       |
| 7 Quick Stop Fruit Mart J3             | 25 Swan Valley Fresh Fruit D6     |
| 8 Keller's Farm I3                     | 26 Ali's Vineyard D6              |
| 9 Providore and Coward & Black H3      | 27 Padbury Pickings D6            |
| 10 Margaret River Chocolate Co. H3     | 28 The House of Honey D6          |
| 11 West Swan Fresh H3                  | 29 Kafarella's Vineyard F6        |
| 12 Windarra Honey G4                   | 30 Swan Valley Settlers Market F7 |
| 13 The Billy Goat Shed G4              | 31 Mondo Nougat & Morish Nuts G6  |
| 14 Albion on Swan E5                   | 32 Nguyen G6                      |
| 15 Swan St Vineyard The Old Shed D5    | 33 Whistler's Chocolate Co. H6    |
| 16 Grapes on Swan C5                   | 34 M&F Murace H9                  |
| 17 Lancastr Wines C4                   | 35 Fazzalari H9                   |
| 18 Swan Valley Sisters Produce Cafe B4 | 36 Jane Brook Fresh Market H9     |

## SHOPPING

- |                                   |                                     |
|-----------------------------------|-------------------------------------|
| 1 Yahava KoffeeWorks H4           | 7 Shalom Ladies Cafe & Boutique F6  |
| 2 Providore and Coward & Black H3 | 8 The Tribe F6                      |
| 3 Lavender Bistro & Boutique H3   | 9 Swan Settlers Market F7           |
| 4 Swan Valley Market Place G5     | 10 Mondo Nougat & Morish Nuts G6    |
| 5 Lolly Stop E1                   | 11 Midland Gate Shopping Centre L6  |
| 6 Swan Valley Station E5          | 12 Annie's Collective Wonderland M6 |

## ARTS & CRAFT

- |                                  |                                    |
|----------------------------------|------------------------------------|
| 1 Maalup Aboriginal Gallery J4   | 8 Illusionary Art G6               |
| 2 Sacred India Gallery H2        | 9 Battistessa Studio G9            |
| 3 Bright Press E2                | 10 Jude Taylor Art Studio H6       |
| 4 Handcraft E2                   | 11 Gomboc Gallery Sculpture Art I7 |
| 5 Village Art Gallery E2         | 12 Midland Junction Arts Centre L5 |
| 6 Celtic Swan Furniture A7       | 13 Ember Antiques Arts & Clocks M3 |
| 7 Swan Valley Settlers Market F7 | 14 Guildford Village Potters M2    |

# Swan Valley Visitor Centre



Plan your perfect Swan Valley escape with a visit to Australia's most awarded Visitor Centre. Our friendly, knowledgeable team is here to provide personalised advice, maps, and recommendations to suit every visitor. From family-friendly attractions to romantic hideaways, natural wonders, and award-winning experiences, we know the Swan Valley inside and out. Open seven days a week, we're committed to making your visit unforgettable with accessible, high-quality service. Stop by and discover why we've been recognised as the best in the business. Your Swan Valley adventure starts here!

swanvalley.com.au Ph: 9207 8899  
Cnr Meadow & Swan Sts, Guildford

# d'Vine Wine Tours



It has been so very wisely spoken that drinking good wine with good food in good company is one of life's most civilised pleasures. At d'Vine Wine Tours, they totally agree! They believe there is something magical about combining these three things, and it's even more magical when you throw the beautiful Perth Wine Regions in the mix. d'Vine Wine Tours provides quality and professional tours which run on a daily basis, as well as corporate and private packages. The tours visit the Swan and Bickley Valley; both equally unique and offering something for everyone! Visit award winning wineries, craft breweries, chocolatiers, cider houses, gin distilleries and more!

dvinetours.com.au Ph: 9244 5323  
Swan Valley

# Caversham Wildlife Park



Just 16km from Perth's major hotels, Caversham Wildlife Park boasts over 200 species and over 2000 animals including koalas, Tasmanian devils, wombats, possums, dingos, quoll, flying fox, reptiles and native birds including cassowary, owls and emus. Visit the farm animals including ponies, camels, goats and chickens. Take home a unique souvenir and have a photograph taken with koalas, feed the kangaroos and experience this amazing collection of animals in beautiful natural bushland. Open 7 days, 9am to 4.30pm.

cavershamwildlife.com.au Ph: 9248 1948  
Drumpellier Drive, Whiteman

# Sandalford Wines



One of Australia's oldest and most prestigious privately-owned wineries, Sandalford's establishing estate was founded in 1840. Today, Sandalford is a Swan Valley landmark, its restaurant feted with dozens of Gold Plate awards and their seven ranges of wine acclaimed by both judges and an appreciative public. Visit for winery tours and experiences, food and wine pairings, wine blending, and lunch or dinner. Graze on seasonal menus while the children enjoy the barrel themed playground and reacquaint yourself with their world class wines. Open daily for lunch from 11.30am, with dinner service Friday and Saturday.

sandalford.com Ph: 9374 9374  
3210 West Swan Rd, Swan Valley

# Mandoon Estate



Located overlooking the Swan River, Mandoon Estate is Swan Valley's most awarded winery and top destinations. Our Cellar Door offers Wine & Food flights, Wine Blending experiences as well as general wine tasting. Homestead Brewery offers casual dining from 7.30am until 8pm. Mandoon Estate also hosts a fine dining option, Wild Swan restaurant open Friday - Sunday. Maalunup Aboriginal Gallery with Indigenous Experiences open Thursday - Sunday and our Boutique Hotel, Maya Maya to stay awhile. Only 25 minutes from the city and open 7 days a week.

mandoonestate.com.au Ph: 6279 0518  
10 Harris Road, Caversham

# Whiteman Park



Whiteman Park is the state's most diverse tourist attraction. Covering 3732 hectares of natural bushland and open parklands, it is one of the largest metropolitan parks in the world. Visitors can enjoy an extensive range of activities and attractions, such as the seasonal mini water playground, children's play areas, bus and wildlife tours, Revolutions Transport Museum, motor and tractor museums, vintage train and heritage tram rides, pedal kart hire, a craft village, Children's Forest, Caversham Wildlife Park, Woodland Reserve, and expansive parkland facilities available - all surrounded by native bush.

whitemanpark.com.au Ph: 9209 6000  
Drumpellier Drive, Whiteman

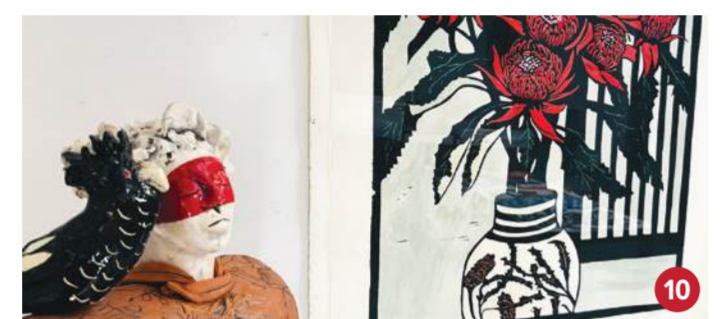
# John Kosovich Wines



Established in 1922, family owned John Kosovich Wines is one of the oldest wineries in the Swan Valley. We focus on producing small batch exceptional wines made from estate grown hand-picked grapes. Wine tasting is in our hand dug below ground cellar which was completed in 1927. Our wines reflect the unique qualities of our Swan Valley and Pemberton vineyard sites, and our winery has a unique blend of old and new, reflecting more than 100 years and three generations of family winemaking history. Open Wednesday to Monday.

johnkosovichwines.com.au Ph: 9296 4356  
180 Memorial Avenue, Baskerville

# Jude Taylor Art Studio



Located at popular cafe Taylors in the Valley, this collaborative artist studio showcases two celebrated Western Australian artists. Jude Taylor, a highly collected artist with nearly four decades of work, is renowned for her hand-coloured linocut prints, inspired by the resilience and beauty of native wildflowers in the harsh WA outback. Trudy Hardman, a ceramic and glass artist based in the Swan Valley, creates sculptural Australian bird forms in clay, reflecting environmental concerns. The studio also offers lino-cut and ceramic workshops and is open by appointment only.

judetaylor.com Ph: 0438 443 222  
510 Great Northern Hwy, Middle Swan

# Swan Valley Tours



Experience the Swan Valley's finest wineries, breweries, distilleries, and eateries with Swan Valley Tours. Choose between a half or full day coach tour, and let their expert guides lead you through the best of the region's wines, beers and produce. Or embark on a stunning and indulgent 2-hour river cruise from the Perth CBD, with a WA wine tasting and delicious shared lunch as you journey to the Swan Valley. The only place in Australia where you can depart a capital city by boat and arrive in an award-winning wine region in the same day.

svtours.com.au Ph: 9274 1199  
Swan Valley

# Yahava KoffeeWorks



Discover Yahava KoffeeWorks, Swan Valley's iconic coffee destination, where every cup is an adventure.. Enjoy free coffee tastings, take part in our signature coffee roasting demonstration, and sip on world-class brews. Chat to our tasting guides and hear wild coffee tales, or slowdown take in the majesty of our beautiful surrounds and that Swan Valley air. Perfect for coffee lovers and adventurers alike. Yahava offers an unforgettable stop in your Western Australian journey. Visit us and take a piece of the Swan Valley home with you - we can't wait to welcome you!

yahava.com.au Ph: 9250 8599  
4752 West Swan Road, West Swan

# Pasta in the Valley



Nestled amid the grapevines in Swan Valley, Pasta in the Valley stands out as a distinctive, family-owned and family friendly restaurant. This licensed eatery offers seating for up to 200 people, both indoors and under the outdoor alfresco areas. Step inside, and you'll be captivated by the restaurant's centrepiece - a remarkable 30-meter-long industrial pasta making machine. This unique marvel has the impressive capacity to product 6 tonnes of pasta per day, making it the only one of its kind on display in an Australian restaurant. Email bookings@pastaainthevalley.com.au.

pastaainthevalley.com.au Ph: 0419 741 936  
2931 West Swan Road, Caversham

# Sin Gin Distillery



We're open 7 days a week for you to visit our distillery; see the stills, taste our gins, pick up a gift, enjoy a cocktail and meet our distilling staff. Pop in or book online. For a hands-on experience, attend our MAKE YOUR OWN GIN workshop and you'll take away a unique bottle of gin with your personalised flavour profile! You'll be pleased to know that grapes grown in the Swan Valley form the base spirits for our products. Come and try our many award winning gins.

singindistillery.com.au Ph: 0406 654 502  
124 Lennard St, Herne Hill

# Margaret River Chocolate Company



The Margaret River Chocolate Company is a must-visit destination for chocolate lovers. Located in the heart of the Swan Valley for almost 25 years, our factory offers an unforgettable experience where you can watch chocolate being made, enjoy some free tastings, and explore a variety of handcrafted chocolates. From rich truffles to creamy hot chocolate, there's something for everyone. Bring your friends and family, enjoy the stunning surroundings, and indulge in the sweet side of life. Come down today and discover the magic of WA's finest chocolate!

chocolatefactory.com.au Ph: 9250 1588  
5123 West Swan Road, West Swan

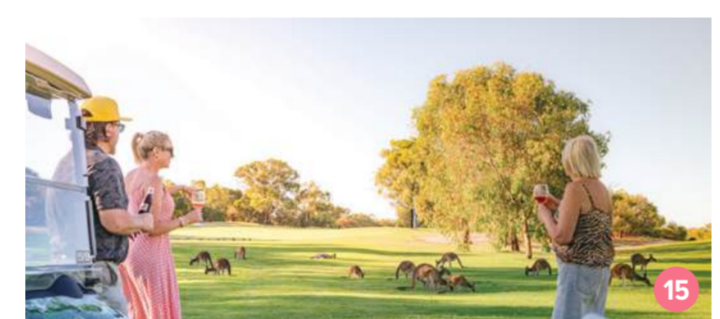
# Great Northern Distillery



The Great Northern Distillery has the process of spirit-tasting down to a fine art. Offering their extensive range of premium barrel-aged rums, gin, vodka and delectable liqueurs since 2006. This friendly boutique distillery is the Swan Valley home of the Kimberley Rum Company, the makers of the internationally awarded Canefire Rum. Come and enjoy a refreshing cocktail, or a tippie of handcrafted premium Australian rum, in the courtyard and grassed al fresco area. Tastings available for individuals, couples and small groups of under 12 people.

canefire.net Ph: 0420 884 585  
496 Great Northern Hwy, Middle Swan

# Kangaroo Safari at The Vines Resort



Set against the stunning backdrop of The Vines Resort in the Swan Valley, the Kangaroo Safari is a unique experience offering the opportunity to be immersed in the natural beauty of the region while getting up close and personal with the iconic Australian kangaroos. Embark on a journey aboard motorised buggies, venturing through the resort's picturesque golf course where you will have the chance to witness kangaroos in their natural habitat, as well as learn fun facts from our tour guides - a great experience for visitors of all ages. Tickets \$69 per person. Departs daily from 4pm. Tickets include safari, drink and 18 holes of mini golf. Bookings essential.

kangaroosafari.com.au Ph: 9297 3000  
Verdelho Drive, The Vines

# The House of Honey & The Sticky Spoon Cafe



Located in the picturesque Swan Valley, The House of Honey is a sanctuary for local bees and hives. As a family-owned and operated business, we've been looking after and protecting our bees for over 30 years - the delicious raw honey we craft and pass on to you is a nice bonus! The House of Honey also has a buzzing onsite cafe, runs bee safaris, workshops, tours, and more and is Swan Valley's destination for high quality honey! Taste our pure honey varieties including Jarrah or honey mead whilst viewing a display beehive. Relax in our cafe with a Devonshire tea or honey ice-cream. Open 7 days, 10am-5pm.

thehouseofhoney.com.au Ph: 9296 3635  
867 Great Northern Hwy, Herne Hill

# AmberChes Spirits Distillery



AmberChes Spirits is a family run distillery based in the Swan Valley. Our cellar door is nestled among eleven acres of lush grapevines along the Great Northern Highway where you can try our award-winning spirits, enjoy some food with a glass of wine or cocktail and even turn your hand to producing your own Gin in one of our Gin Distilling Master classes. AmberChes was named Best Beverage Producer in the Swan Business Awards 2023 and 2024 with opening hours Friday to Monday, 11am to 5pm, and additional hours shown on our website. Follow us on Instagram and Facebook @amberchesdistillery.

amberchesdistillery.com.au Ph: 0400 011 029  
1050 Great Northern Hwy, Baskerville

# Bailey Brewing Co



Located on the intersection of Park Street and West Swan Road and nestled within the picturesque native bushland of Henley Brook, Bailey Brewing Co. delivers a relaxed rural family experience within 25 minutes of Perth City. Their 9-and-a-half-acre venue boasts a state-of-the-art brewery, 245-capacity tavern, an epic playground for the kids, beautiful grass areas and so much more. Bailey Brewing Co. offers delicious, fuss-free pub classics on the menu - something that suits the whole family. Bailey Brewing Co. is your one-stop-shop for all things good food, great craft beer, and fun vibes! Open Tuesday to Sunday.

baileybrewingco.com.au Ph: 6192 1830  
9861 West Swan Rd, Henley Brook

# Pinelli Estate Restaurant & Cellar Door



Located just 20 minutes from the Perth City Centre, Pinelli Estate is a must-visit for any wine and food enthusiast to the Swan Valley. Having been an integral part of the Swan Valley for over 40 years, visitors can relax at the Gold Plate award winning Restaurant set amongst the scenic grapevines of the Estate whilst enjoying the Australian modern menu on offer. Visitors can also explore a tasting of the handcrafted and award winning wines from the family wine making team guided by the friendly Cellar Door team. Cellar Door is open 10-4pm daily, restaurant is open for lunch Wednesday to Sunday until 4:30pm, dinner on Saturday until 10:30pm

pinelliwines.com.au Ph: 9279 6818  
30 Bennett Street, Caversham

# The Guildford Hotel



The Guildford Hotel welcomes you to experience history with a modern twist at the mouth of the Swan Valley. Wander through the charming building, brimming with character and echoes of past. Preserving the venue's unique charm while creating a fresh and exciting experience for all. The new playground offers a perfect place for families to spend an afternoon. The Guildford Hotel offers a casual menu, mixing pub classics with a modern twist, with plenty of smoked meats straight from our in-house smoker. Quench your thirst with an extensive range of beers, wines and fresh cocktails.

theguildfordhotel.com.au Ph: 9460 9966  
159 James Street, Guildford

# Riverbank Estate



Discover the best seafood platter and dry-aged steaks in Perth at Riverbank Estate, a prestigious 5 Red Star Halliday Winery, where our à la carte menu is served Wednesday to Sunday. Indulge in in-house dry-aged, regeneratively farmed WA beef, or savour live Western Australian seafood straight from our tanks, including Broome mud crab, Lancelin lobster, Manjimup marron, and Wheatbelt yabbies. Pair your meal with our award-winning, estate-grown and bottled wines. We also specialize in hosting unforgettable corporate events and weddings in a stunning vineyard setting, offering an experience of luxury and sustainability.

riverbankestate.com.au Ph: 9377 1805  
126 Hamersley Road, Caversham

# Mondo Nougat & Morish Nuts



No visit to the Swan Valley is complete without a stop at Mondo Nougat and Morish Nuts. The family owned and run businesses combine a café, retail and production facilities, where most weekdays, you can watch slabs of delicious nougat and trays of tasty nuts being handcrafted through the viewing window. Traditional recipes, the finest Australian ingredients and unique flavour combinations will leave you wanting more. Mondo Nougat and Morish Nuts - the tempting treats your family and friends love to eat. Open 7 days, cafe open Tuesday to Sunday.

mondomorish.com.au Ph: 9296 0111  
640 Great Northern Hwy, Herne Hill

# Twin Hill Wines



Situated in the heart of the Swan Valley, Twin Hill Wines has been owned and run by the Kraljevich family for over 85 years. Established in 1937, Twin Hill Wines is full of old style charm and character; enjoy our range of red and white table wines, luscious fortified wines, including our popular bulk Tawny, gourmet cheeses and olives in a friendly relaxed atmosphere. Pop into our cellar door any time with visiting family and friends, but if there's a few of you (more than 10), please phone to make a booking. Bookings for groups are essential at \$8 per person. This includes your cheese, olives and wine tastings. Open Wednesday to Sunday 10am - 4pm.

twinhillwines.com Ph: 0438 956 329  
1093 Gt Northern Hwy, Baskerville

# Duckstein Brewery



If you are planning to visit Western Australia's Swan Valley you can be assured that you will enjoy quality German-style dining and premium hand-crafted beer set in the most pleasant surroundings. The Duckstein Brewery was one of the pioneers of craft brewing in Western Australia's popular Swan Valley where it continues to offer a traditional German dining experience and live music on most weekends. With premium hand-crafted beer, we guarantee you will enjoy our 16 hour slow-roast Pork Knuckle with its soft meat and crispy crackle. Open 7 days.

duckstein.com.au Ph: 9296 1931  
9720 West Swan Road, Henley Brook